

**RCMP VETERANS' ASSOCIATION
EDMONTON DIVISION
SPECIAL INFORMATION PACKAGE**

Upon Your Death



Compiled for the information of all retirees and their families on behalf of your Edmonton Division Executive

Your Edmonton Veterans' Association Executive has prepared the following to help the spouse, executor, or executrix in the event of a pensioned member's death, but the information can be helpful to anyone experiencing a death within their family. There are several website links contained in this package and should you experience difficulty with any of these links or the contact people provided, please contact Vet. Kees Kikkert or Joe Collinson as noted on page #9.

We also encourage anyone who is having difficulties with respect to a death **or any other matter** to reach out and contact us at: President@edmrcompvets.ca or Kees and/or Joe as per page #9.

Keep this information with your Will

In life, there are only two certainties, death and taxes and you must be prepared for both eventualities. The first prerequisite is to have a legal, properly registered '**Last Will & Testament**' to assist the executor/executrix to manage the transfer of assets to the beneficiaries of your estate. In conjunction with the preparation of a Will, you should compile an **accurate record of the assets** of your estate. This record should be stored in an accessible location so the executor/executrix can settle the estate efficiently and effectively. Obtaining the assistance of your banker, financial consultant and/or lawyer is often advisable. Most bankers will say in the event of a death they should be among the first notified. Every bank has different policies with respect to access to accounts and, therefore, it is advisable to discuss this eventuality with them, so you are familiar with their process. **NOTE:** *Couples should be aware when one of the two is the Primary Credit Card Holder (usually the husband), the spouse as the co-applicant of that credit card will NOT be allowed to use the Credit Card when the primary holder dies. This is particularly important if the couple do a lot of travelling. Check with your Credit Card Company as to their policy.*

When a retired member on pension dies, the survivor, executor/executrix of the estate **MUST** immediately contact and inform **The Government of Canada Pension Centre at:**

**Public Services and Procurement Canada
Government of Canada Pension Centre - Mail Facility
PO Box 8500
Matane, QC G4W 0E2**

In Canada and/or United States: Toll Free: 1-855-502-7090

Outside Canada and the United States

Ph: 506-533-5800 (collect calls accepted) Monday to Friday 8:00 am to 5:00 pm (**Atlantic Time**)

Email: PWGSC.PensionCentre-Centredespensions.TPSGC@pwgsc-tpsgc.gc.ca

Fax: 1-418-562-7965

NEW! As of June 15th, 2021 the administration of the RCMP Group Life & Disability Insurance Plans was moved from Morneau Shepell to SEB (Smart Employee Benefits) Administrative Services Inc.

Contact Information:

**RCMP Benefits Administration Centre c/o SEB Administrative Services Inc.
4th Floor, 5500 Explorer Drive
Mississauga, Ontario L4W 5C7, Canada
Phone: 1-833-231-0648**

Email: info@seb-admin.com **SEB Website:** <https://www.seb-admin.com/en-ca/>

CHANGE TO PERSONAL INFORMATION: To update your personal information such as your mailing address or to make changes to your pension benefits, e.g. beneficiary, contact the Pension Centre by telephone or email. Their contact information is as noted above.

When you contact the Pension Centre be prepared to provide the following information:

- Full Name of RCMP Pensioner
- Pension Number
- Regimental Number & Rank
- Date of Birth
- Date of Death
- Immediate next of kin, including street address and telephone number
- Social Insurance Numbers (SIN) of the survivor, spouse and any dependent children
- A copy of the Provincial death certificate or a Funeral Director's Statement of Death will be required in due course. **NOTE:** If the pensioner's spouse has predeceased, a copy of his/her death certificate or Funeral Director's Statement of Death will also be required.

Although this is a stressful time it is very important the Pension Centre be advised as soon as possible and once notified, the survivor - executor/executrix - will receive a letter in approximately two weeks from the Pension Centre advising the basic and/or optional life insurance (Great West Life Insurance) of the deceased member. It takes five to eight weeks before the spouse receives the Death Package material advising options available with respect to pension benefits. Should these materials not be received in a timely fashion it is highly recommended the Pension Centre be contacted by telephone or email to ensure they have forwarded your letter and information package.

The spouse will be required to complete separate forms to establish eligible survivor benefits and insurance payouts when applicable. Other things to be considered are:

- Taxes payable on the deceased member's pension
- Advising Alberta Health Care (usually taken care of by Funeral Home)
- Continuation of Public Service Health Care Plan (PSHCP) - Extended Health
- Continuation of Dental Plan – spouse will receive Form and must apply to gain benefits
- Direct Deposit (to be set up in spouse's name)
- Canada Pension Plan Lump sum benefits
- Canada Pension Plan Survivor Benefits
- Advice to current or previous employers

Note: Most benefits must be applied for within **60 days** of the date of death.

The following Alberta Government Web Page dealing with "Death" also has some useful information:

<https://www.alberta.ca/death.aspx>

BURIAL MARKERS - (RCMP policy noted below)

The three options are:

1. Upright Granite Headstone
2. Flat Granite Headstone (flush with ground)
3. Flat Bronze marker, mounted in a granite base (raised about 4" above ground)

All bear the RCMP crest, member's name, rank, regimental number, date of birth and date of death (see example photo's below).



UPRIGHT GRANITE HEADSTONE
76.2 cm high
45.72 cm wide
7.62 cm thick

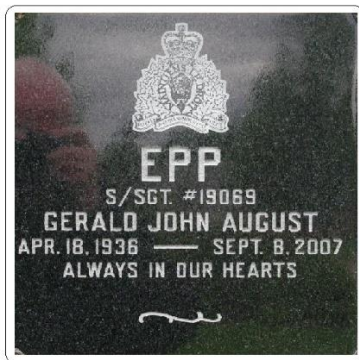


FLAT GRANITE MARKER
50.8cm wide
30.48cm high
7.62cm thick

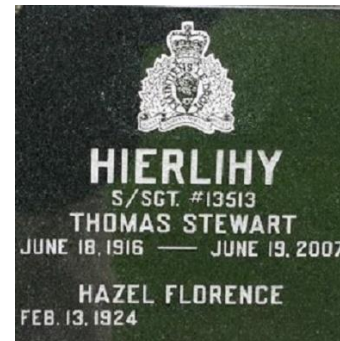


FLAT BRONZE MARKER
60.96cm wide
30.48cm high
.635cm thick
INSCRIPTION RAISED .32 cm

EXAMPLE NICHE PLATES



Niche Plate with Member Only



Niche Plate with Member and Spouse

The following are excerpts from the RCMP National Compensation Manual

1. 4. All funeral and burial benefits are for services in Canada, and within a provincially registered cemetery, unless otherwise specified.

1. 5. The following are the RCMP-designated cemeteries: "Depot" Division, Maple Creek and Battleford, Saskatchewan, Fort Saskatchewan, Alberta, and Beechwood Cemetery, Ottawa, Ontario.

2. Serving Member including Retired to Pension

2.1. Plot or Niche

2. 1. 1. Deceased members who died while serving, or members retired to pension eligible for an immediate annuity or annual allowance at the time of discharge, and the remains of RMs transferred from a lonely grave, are eligible for a plot or a columbarium niche, at no cost, in an RCMP-designated cemetery.

2. 1. 1. 1. This benefit will remain in force, even if the member retired to pension is subsequently re-employed and surrenders his/her annuity, in recognition of his/her RCMP service.

2. 1. 2. Eligible survivors are also eligible for burial in RCMP-designated cemeteries, as space allows. Any additional costs, including a larger plot or niche, or the opening or closing of the grave site, to accommodate a survivor, will be at the estates expense.

2. 1. 3. The remains of a survivor may be placed in the same plot or niche, as the deceased member, at the expense of the estate, provided the remains can be accommodated, and the request complies with local cemetery restrictions.

2. 1. 4. Pre-selection in a RCMP-designated cemetery of a burial plot or niche will not be accepted before the death of an eligible person. After the death of an eligible person, at the request of the next of kin, the CO/delegate will make arrangements for the burial in a RCMP-designated cemetery.

2. 1. 4. 1. The cost associated to the single portion of a double plot selected before the member's death will be reimbursed only at the death of the member. Ensure the original invoice and receipt are retained and that the single plot cost is shown on that original invoice for future payment from public funds.

2.2. Burial Markers

2. 2. 1. The specifications for the RCMP regimental headstone and markers are as shown on page #4 above.

2. 2. 2. The CO/delegate has authority to reimburse the provider, the next of kin, or the Executor/Executrix of either a deceased serving member or retired pensioner who retired with an immediate annuity or annual allowance under the [RCMP Superannuation Act](#) or [RCMP Pension Continuation Act](#), an amount from public funds in keeping with current market prices for those items listed below. Arrangements should be made on behalf of the survivors or Estate by the CO/delegate with a local manufacturer, for the manufacture, transportation, and placement of a:

2. 2. 2. 1. regimental headstone or marker, and base, if required, if burial takes place in Canada; or

2. 2. 2. 2. for the payment of a non-regimental headstone, marker, or niche marker of choice in Canada to a maximum of \$220, provided there is a reference on the headstone, marker, or niche to the member's service in the RCMP.

2. 2. 3. Ensure the next of kin is aware that the choice of headstone or marker must comply with local cemetery restrictions. This is of particular importance as these markers are no longer centrally produced. Regimental headstones or markers provided by the RCMP bear a uniform size and inscription, and no change from the format is allowed.

2. 2. 4. The CO/delegate can authorize the placement of a RCMP regimental headstone or marker in a RCMP cemetery, or on any lonely grave, when it is not feasible to transfer the remains to a RCMP cemetery.

Policy Amended: 2020-07-17

For more information on Regimental Headstone/Markers please contact:

*George Madden, M.Div.: DCC.
K Division Chaplain Coordinator
Employee Services
Royal Canadian Mounted Police / Government of Canada
george.madden@rcmp-grc.gc.ca / Cell: 780-717-7903*

Mission Statement

“K” Division chaplaincy program is here to supply encouragement and support for all members, employees, veterans, and families of the RCMP. Our goal is to promote and provide member wellness for all “K” Division employees in a caring and non-judgmental manner by providing the following services:

- Member care in the event of any serious incidents, professional or personal
- On call care that is provided 24/7 by men and women in your local community that are professionals who have a heart for you and your family’s wellbeing.
- Professionally trained people who will listen in a confidential manner when called upon by you.
- Accompanying members with next of kin notifications
- Attending critical incident stress debriefings and defusing’s
- Officiating marriages, celebrations of life, baptisms for members and their families.
- Conducting hospital visitations
- Providing and supporting spousal support groups in local detachments and communities
- Helping introduce new employees and families to their new communities
- Being a resource for all employees to provide tools that can strengthen marriages and families

There are voluntary chaplains throughout Alberta. If you wish to contact one within your area please contact Chaplain George Madden as per above.

Peer to Peer System

The internal peer to peer system is part of the RCMP's Employee Assistance Policy. It provides all categories of RCMP employees and Veterans with access to internal Peer to Peer Coordinators. Whether it's a work-related or personal issue, Coordinators can provide information on the services offered through Health Canada's Employee Assistance Services (EAS), as well as resources within the RCMP that could help address the situation.

The Peer to Peer System will be administered at the divisional level under the direction of the Commanding Officer. In this way, it can be developed to focus on specific needs of the division, guided by a national Employee Assistance Policy. The Peer to Peer Advisors will be administered in "K" Division under the direction of the Peer to Peer Coordinator.

The RCMP "K" Division Peer to Peer Coordinator

Cpl. Jocelyn Cardinal

Email: jocelyn.c.cardinal@rcmp-grc.gc.ca

Ph: 780-412-5373 or Cell: 780-224-3880 (24 hrs.)

Email: RCMP.KConfidentialPeerSupport-KConfidentielleEntrePairs.GRC@rcmp-grc.gc.ca

Support for Operational Stress Injury Program

The Support for Operational Stress Injury (SOSI) Program provides peer support to employees of the RCMP, regardless of rank or category of employee, **as well as veterans.**

Have you been recently diagnosed with an operational stress injury (OSI), or are you experiencing [symptoms](#) from OSIs? If you are having trouble with your daily functioning, **don't suffer in silence!** Our SOSI coordinators can help.

Our peer support network will connect you to a supportive community of people with similar experiences and resources to help.

Our coordinators can if you so choose:

- meet with you one-on-one
- provide helpful resources and information
- help you connect with others who are in similar situations
- facilitate group discussions

You are in control of how fast or slow you go from here and how much support you want. Your conversations are kept **confidential, respectful, and non-judgmental** at all times.

K Division Contact:

Glen Haner

Support for Operational Stress Injuries

K Division

Phone 403-699-2421

Cell 587-439-2622

glen.haner@rcmp-grc.gc.ca

Support. Connection. Resilience

Burial Entitlements:

If next of kin of an eligible person, as per the policy above, is interested in a plot for burial or a niche in a columbarium in one of the following RCMP-designated cemeteries, contact information is as follows:

Depot Division

For funeral or Cemetery requests, please contact Chaplain Jean Morisset at jean.morisset@rcmp-grc.gc.ca or Ph: 639-625-3325, cell 306-502-1170. He can also provide information on use of the columbarium and can give the family details if they wish to have a service in the chapel at Depot. The RCMP Veterans' Regina Division Ladies Auxiliary will put on a luncheon for a minimal fee at the Officer's Mess. Arrangements can be made through the Chaplain's office.

Maple Creek, Sask.

Cemetery is full; no longer accepts burials.

Northwest Mounted Police Cemetery, Battleford, Sask.

For Funeral/Cemetery Requests please contact Chaplain Tom McCullagh, "F" Division's contact, at tom.mccullagh@rcmp-grc.gc.ca or Ph: (639) 625-3324 or (306) 737-0535 or (306) 780-7957 for burial plots OR a Niche in the Columbarium.

RCMP Fort Saskatchewan Cemetery

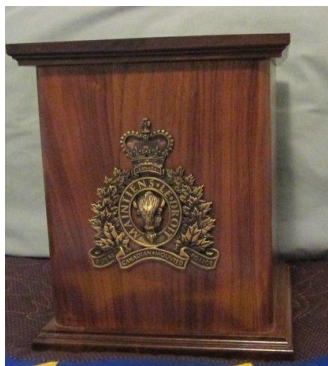
The RCMP Cemetery is located within the confines of the City of Fort Saskatchewan's Cemetery located at 11086 – 86th Ave., Fort Saskatchewan, Ab. For those interested in a burial plot OR a niche in the Columbarium please contact **Chaplain George Madden** as noted above on page #6. **NOTE:** When an RCMP headstone or marker is ordered it will take up to three to four months for the entire process: ordering, delivery, and installation.

When obtaining a niche in the Columbarium the process will take two to three weeks to have the niche plate engraved **which is done by Summit Memorials Ltd., 4435 97 Street NW, Edmonton, AB** - Ph: 780-433-7100. Installation of the niche plate is done by the City of Ft. Saskatchewan personal.

RCMP National Memorial Cemetery - Ottawa

The cemetery is located at 280 Beechwood Ave., **Ottawa, Ontario** (K1L 8E2). Although this cemetery is not an RCMP owned cemetery, it has been designated an RCMP Cemetery, however, it is suggested to make contact with Ottawa RCMP Veterans' Division, Membership Services Director before purchasing a plot or a niche. Other inquiries can be made by contacting Beechwood liaisons at Beechwood, Funeral, Cemetery, and Cremation Services: Tel: 613-741-9530 Fax: 613-741-8584 Email: info@beechwoodottawa.ca **or through this website:** <http://www.beechwoodottawa.ca/en/communities/defence-and-security-services/rcmp-national-memorial-cemetery>

Edmonton Veteran's Association makes Urns available at no cost **to Active Members of the RCMP Veterans' Association Edmonton Division and their spouse** who have died; picture as noted below. These urns are made by one of our Veterans at no cost to our Association. Non-Vet members can obtain similar urns through Barn and Stable Regimental Trunks & Urns at their website: <http://barnandstable.com/> or Email: info@barnandstable.com or Phone: 604-574-2764.



A member of the Golden Horseshoe RCMP Veterans Association, living in Hamilton, ON specializes in the sale of cultured marble cremation urns. He will pass on price savings to Vet Members compared to prices normally found at funeral homes or cemeteries. His contact information is as follows: Dave Miller, Kada Tributes: Webpage: kadatributes.ca Phone: 1-905-512-5494

EDMONTON VETS ASSN has a "pall" which can be used to cover a casket or folded and placed on a table at a Memorial Service. It is elaborate with blue and gold trim and the RCMP VETERAN'S CREST on each end. Our Veteran's Association will contact the member's NOK to see if they wish to use this item, and if so, it will be delivered to the service site. An Honour Guard can also be made available if the NOK so wishes.

Birth and Marriage Certificates should be available in the event of a death. If you don't have these certificates and wish to obtain them and the person was born and/or married in Canada, the documents can be obtained through the various provincial or territorial government offices whose addresses and phone numbers can be located at the following website by clicking on the appropriate Province or Territory.

https://www.canadainternational.gc.ca/australia-australie/consular_services_consulaires/certificates-certificats.aspx?lang=eng

Other web sites and phone information that may be of interest are as follows:

- Government of Canada: <https://www.canada.ca/en.html>
- Public Service Health Care Plan (PSHCP) Toll free: 1-888-757-7427 in Canada. For all other contact numbers proceed to the webpage: <http://www.pshcp.ca/>
- Canada Pension Plan Survivor Benefits: Ph: 1-800-277-9914
<https://www.canada.ca/en/services/benefits/publicpensions/cpp/cpp-survivor-pension.html>
- Service Canada: <https://www.canada.ca/en/employment-social-development/corporate/portfolio/service-canada.html>
- National Association of Federal Retirees (formerly known as Federal Superannuants National Association): <https://www.federalretirees.ca>
- Veterans Affairs Canada: Ph: 1-866-522-2122 (English) <http://www.veterans.gc.ca/eng/>
1-866-522-2022 (French) <https://www.veterans.gc.ca/fra/>

For clarification on any of the information within this document contact the following Veteran Executive Members:

DIRECTOR: Kees KIKKERT: Cell: 780-991-5030 - keeskikk@telus.net

FOR AN HONOUR GUARD: Joe COLLINSON - 780-467-2134 - ajhc@ajhc.ca